



# profession

INSTRUCTION MANUAL  
BETRIEBSANLEITUNG

EN

DE

MANUAL PRESSURE SPRAYER

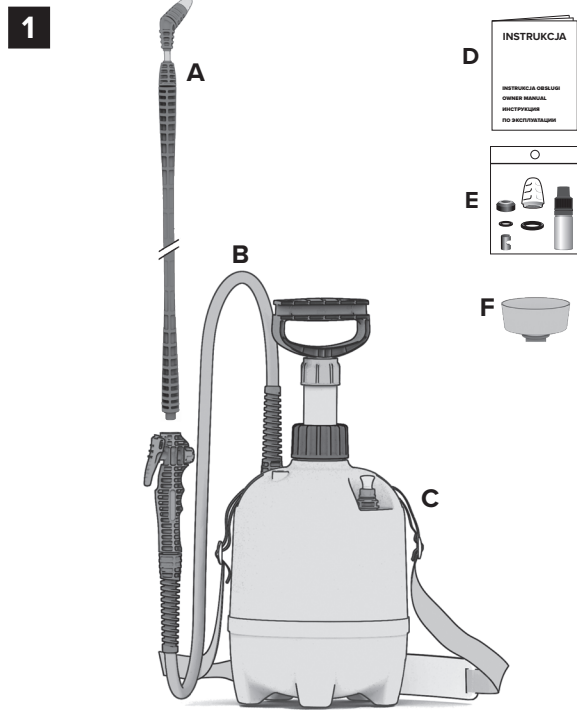
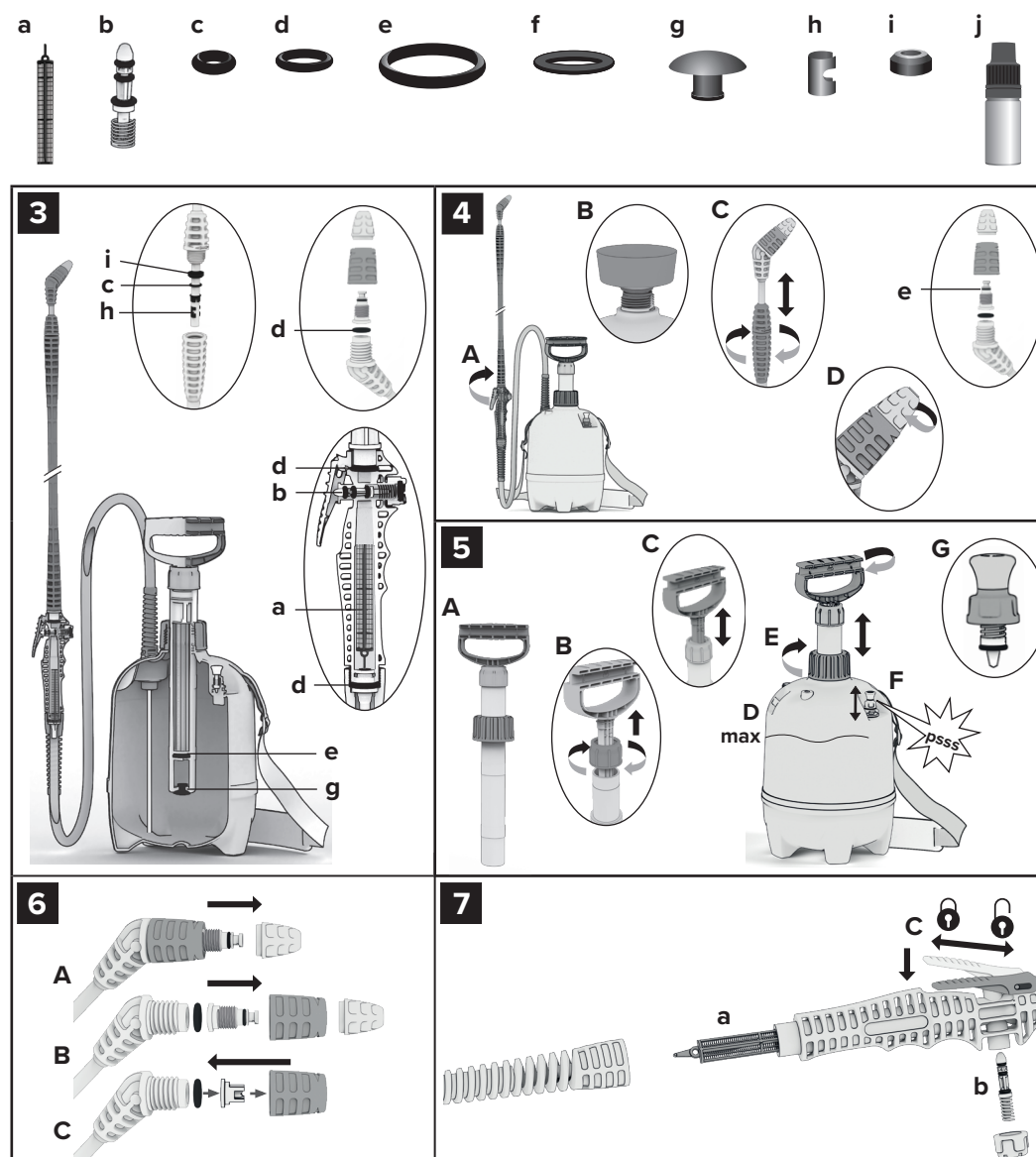
MANUELLES  
DRUCKSPRÜHGERÄT

TECHNICAL DATA / TECHNISCHE DATEN				
MODELL	Profession 5	Profession 7	Profession 9	Profession 12
Product symbol / Produktsymbol	S031.141	S032.141	S033.141	S034.141
Net weight / Nettogewicht	1,70 kg	1,80 kg	2,00 kg	2,10 kg
Working capacity / Arbeitskapazität	5000 ml	7000 ml	9000 ml	11000 ml
Lance length / Länge der Lanze	65-115 cm	65-115 cm	65-115 cm	65-115 cm
Liquid output / Flüssigkeitsausbeute	0,6 ltr/min			
Max. working pressure / Max. Arbeitsdruck	0,4 MPa (4 bar) (60 PSI)			
Pressure protection / Druckschutz	Safety valve / Sicherheitsventil			
Type of sealing / Dichtungsart	NBR			
Material of the tank / Werkstoff des Behälters	Polypropylene / Polypropylen			

SAFETY SIGNS / SICHERHEITSKENNZEICHEN		
SIGN ZEICHEN	MEANING / BEDEUTUNG	PLACE STELLE
1.	Name plate / Typenschild	On the tank Am Behälter
2.	General warning sign, warning, safety risk / Allgemeines Warnzeichen, Warnung, Gefahr	On the tank Am Behälter
3.	Read the instruction manual before starting work / Vor Beginn der Arbeit mit dem Sprüngerät lesen Sie diese Betriebsanleitung genau durch.	On the tank Am Behälter
4.	Warning against danger of poisoning by toxic substances / Warnung vor Vergiftung durch toxische Stoffe.	On the tank Am Behälter

EU DECLARATION OF CONFORMITY / EU-KONFORMITÄTSERKLÄRUNG	
<p>Marolex declares that the product meets the requirements of the DIRECTIVE 2006/42/EC OF THE EUROPEAN PARLIAMENT AND OF THE COUNCIL of 17 May 2006 on machinery.</p> <p>Die Firma Marolex erklärt hiermit, dass das Produkt den Anforderungen der Richtlinie des EUROPÄISCHEN PARLAMENTES UND RATES 2006/42/EG vom 17. Mai 2006 über Maschinen entspricht.</p>	

## 2 REPAIR SET / REPARATURSET A042.101 (Z08j)



WARRANTY CARD GARANTIESCHEIN	SELLER'S STAMP AND DATE STEMPEL DES HÄNDLERS UND DATUM
DATE OF REPAIR REPARATURDATUM	DESCRIPTION OF DEFECT FEHLERBESCHREIBUNG

MAROLEX Sp. z o.o.  
05-152 Łomna, ul. Gdańska 35  
www.marolex.pl www.forumogrodnicze.info

## GB BETRIEBSANLEITUNG

Manuelles drucksprühgerät  
Profession

### 1. USE AND INTENDED PURPOSE

The profession pressure sprayer is intended for performance of protection and cultivation treatments with water solutions of fertilisers, insecticides, fungicides and herbicides. This is also dedicated to application of eco-friendly paraffin-oil- or gold-of-pleasure-oil-based preparations and plant preparations.

It is recommended to use one sprayer for a selected group of agents.

**NOTE!!! It is not permissible to use chemically active substances, including acids and bases, disinfectants and impregnating products, solvents and agents containing solvents, cleaners and oil derivatives.**

**In case of doubt as to application of any substance or product please contact the technical department: [servis@marolex.pl](mailto:servis@marolex.pl).**

Failure to comply with the rules of this instruction manual may result in loss of warranty, damage to the sprayer or permanent health impairment.

### 2. PROFESSION SPRAYER EQUIPMENT

Fig. 1 presents a sprayer with accessories contained in packages: **A**, telescopic lance with adjustable nozzle MR1,5 mm, **B**, hose with springs, suction pipe and dosing valve with handle, **C**, tank with pump and soft strap, **D**, instruction manual with warranty card, **E**, set of parts: silicone grease, o-ring, nozzle MR1,0 mm, parts for system APS, **F**, funnel with strainer. Marolex reserves the right to make changes in the sprayer equipment.

### 3. PREPARATION AND PROFESSION SPRAYER OPERATION

- Read carefully this instruction manual before starting work.
- Prepare the sprayer and check the function of the safety valve and the tightness of the sprayer with the use of clean water before starting work. For this purpose: screw the lance with a handle integrated and the dosing valve Fig. 4A. Before unscrewing the pump, always check whether the tank is not under pressure lifting the safety valve holder up Fig. 5F until the released air sound is not longer audible. Unscrew the nut of the pump and remove the pump from the tank Fig. 5E, pour clean water with the use of a funnel Fig. 4B. Put the pump into the tank and tighten the nut up, then, pump the sprayer by means of a piston rod Fig. 5C, lift the safety valve holder up Fig. 5F. The valve should emit the audible clear sound of air released under pressure which means proper function of the safety valve. Extend the lance Fig. 4C to the requested length, press the button of the dosing valve Fig. 7C, first, the air and, then, the water should come out from the nozzle.
- To start work with the sprayer: remove pressure from the tank Fig. 5F by means of the safety valve, unscrew the nut and take the pump out Fig. 5E, empty the tank from water, then, pour the solution prepared earlier according to the recommendations of the chemical agent's manufacturer by means of the funnel Fig. 4B, not exceeding the level indicated on the scale Fig. 5D. Insert the pump, tighten the nut up and generate pressure in the tank by means of the piston rod of the pump Fig. 5C. After excessive pumping the safety valve opens automatically releasing the excess of air Fig. 5F. Then, direct the lance toward the place of spraying and by pressing the button of the dosing valve Fig. 7C start spraying. The angle of a liquid stream can be adjusted, for this purpose: turn the nut of the nozzle Fig. 4D until the required angle is achieved. This needs to be done when the sprayer is working. The sprayer can work continuously by pressing the button of the dosing valve and shifting it forward Fig. 7C. After work: release the lock of the dosing valve shifting the button back Fig. 7C.
- It is recommended to adapt a proper nozzle to sprayings with different agents. For this purpose: replace the nut of the nozzle itself or swap the round nozzle for the flat stream nozzle:
  - replacing the (yellow) nut of the round nozzle MR 1.5 mm with the (green) nut MR 1.0 mm. For this purpose: unscrew the yellow nut of the nozzle and screw the nut green of the nozzle Fig. 6A
  - replacing the round nozzle with the flat stream nozzle. For this purpose: unscrew the nut of the nozzle Fig. 6A, then, unscrew the black nut, take the core out and the o-ring Fig. 6B, insert the flat stream nozzle in the black nut Fig. 6C, then, insert the o-ring and tighten it up.

### 4. TYPES OF NOZZLES AND LIQUID OUTPUTS

Adjustable round nozzles	
	MR1.0-90° Ø1.0 mm – green; liquid output – 0,35 l/min
	MR1.5-90° Ø1.5 mm – yellow; liquid output – 0,50 l/min
	MR2.0-90° Ø2.0 mm – red; liquid output – 0,80 l/min
Flat stream nozzles	
	MF2.0-110° Ø2.0 mm – yellow; liquid output – 0,80 l/min
	MF3.0-110° Ø3.0 mm – blue; liquid output – 1,15 l/min
	MF4.0-110° Ø4.0 mm – red; liquid output – 1,65 l/min
	MF1.0-80° Ø1.0 mm – green; liquid output – 0,65 l/min
	MF2.0-80° Ø2.0 mm – yellow; liquid output – 0,85 l/min
	MF3.0-80° Ø3.0 mm – blue; liquid output – 1,20 l/min
	MF4.0-45° Ø4.0 mm – red; liquid output – 1,60 l/min
	MF5.0-30° Ø5.0 mm – brown and gold; liquid output – 2,0 l/min

The sprayer which is once used with plant protection products cannot be used for other purposes!!!

**NOTE!**  
For safety reasons and protection for bees and wild pollinators, first, use natural plant protection products and apply preventive sprayings, and just only in case they fail, use chemical plant protection products. Absolutely follow the waiting periods of sprayings and the times of their performance.

### 5. NOTES ON WORK SAFETY

- Children, pregnant women, ill persons taking medication, persons after drinking alcohol and persons using substances limiting concentration are not allowed to work with the sprayer.
- During the first start-up, check the tightness of the sprayer with the use of clean water.
- While working with chemical agents (also when preparing preparations and destroying packages), it is necessary to use special protective clothing: rubber footwear, gloves, coat, cap, safety goggles, mask or half-mask.
- Do not start working with a sprayer on empty stomach; eating, drinking and smoking is forbidden during work. Drinking alcohol the day before work and after work is not allowed as well.
- Do not remove liquid residues to open waters, sewages or biological wastewater treatment plants. These notes apply also to the liquid used to rinse the tank and other subassemblies of the sprayer.
- Hand over the worn sprayer to the local chemical waste disposal agency.
- A person working with a sprayer should absolutely follow the recommendations included in the packages of chemical agents. In case of poisoning contact your doctor.
- It is unacceptable to work with an inoperative sprayer, non-functioning safety valve or any lack of tightness. After pumping the tank must not be exposed to hitting.
- All service activities should be carried out after decompression of sprayer.
- Wash the sprayer carefully after each use, rinsing it with water several times and before any service activities.
- The use of the sprayer for purposes other than specified in the instruction manual is forbidden.
- It is not allowed to store the sprayer filled with liquid and under pressure.
- The pump located in the tank is the only device used to generate the pressure during work. It is forbidden to use any other devices for this purpose!
- It is not allowed to use: liquids having a temperature of over 40°C, flammable or explosive substances, e.g. petrol, solvents etc.
- Unauthorised modifications introduced to the sprayer and its use against the intended purpose can result in poisoning of people and animals, environmental pollution, damage to the sprayer or serious accidents.
- After work: change the clothes (clean the protective clothing), wash the hands, face, rinse the mouth and throat, clean the nose.
- The user is only responsible for damages resulting from the failure to follow the rules included in this instruction manual.
- It is not allowed to modify, to lock the safety valve as this can cause damage to the sprayer that can result in permanent health impairment.
- Before work, always check the function of the safety valve. For this purpose: pump the sprayer and lift the holder of the valve up Fig. 5F. The sound of air released under pressure should be audible when the holder of the valve is lifted up.
- It is not allowed to direct the lance of the sprayer and to spray the liquid towards the face.
- When the sprayer is used or stored, protect it against access of unauthorised persons, including, in particular, children.
- In case other substances are used, make sure that they can be used in the sprayer and that they are not harmful to the sprayer, people and environment.

### 6. WARRANTY CONDITIONS AND REPAIRS

- The warranty period is 60 months for the tank and 24 months for the other elements of the sprayer. The warranty period starts from the date of purchase.
- A defective part or the sprayer reported for warranty repair should be delivered to the point of sale or sent to Marolex. In case a part or subassembly is damaged please send only this damaged part or subassembly.
- Sprayers, dirty or contaminated with chemical agents, delivered under complaint, will not be repaired. They should earlier carefully emptied, rinsed and cleaned!
- The repairs are performed upon presentation of a valid warranty card or proof of purchase. The guarantor ensure good quality and efficient function of the product when used as intended, under operating conditions specified in the instruction manual.
- The repairs on user's own should be performed only with the use of Marolex original parts.
- When the defect of the good is detected during the warranty period, the guarantor is obliged to repair the defect free of charge within 14 working days.
- The number of repairs after performance of which the seller cannot refuse to replace the good with the new one (if there are still defects in it) is 3.
- The activities mentioned in the instruction manual as the activities belonging to the normal operational service by the holder of the warranty are not considered as warranty repair.
- The manufacturer will refuse to honour a warranty claim if the pressure adjustment is changed, the sprayer is improperly stored or used.
- The company is not responsible for mechanical damage caused by the user. The damaged parts can be replaced by the company in return for payment.
- Please perform warranty repairs in an authorised service point or directly at Marolex.
- The warranty for the sold consumer good shall not exclude, limit or suspend the buyer's rights resulting from the lack of conformity of the good with the contract.

### 7. PROFESSION SPRAYER STORAGE AND MAINTENANCE

- The sprayer should be stored not in sunlight, at a temperature of over +4°C.
- After work: wash the sprayer carefully, rinsing it with water several times, and blow it through with air. Perform maintenance periodically.
- To perform maintenance: check whether the sprayer is not under pressure. If it is, remove pressure from the tank by means of the safety valve, lifting the holder of the valve up Fig. 5F. When the device is washed and blown through with air: unscrew the hose from the grip, take the filter out Fig. 7a and clean it under water with the use of a soft brush. Unscrew the pump Fig. 5E and check whether the piston rod works easily and without jams. If there is any resistance, unscrew the nut of the piston rod Fig. 5B and pull the piston rod out Fig. 5C, lubricate the o-ring Fig. 3e and the internal surface of the cylinder with

